



The Swedish SRB association

Robert Albertsson, Chairman



Swedish Dairy Sector

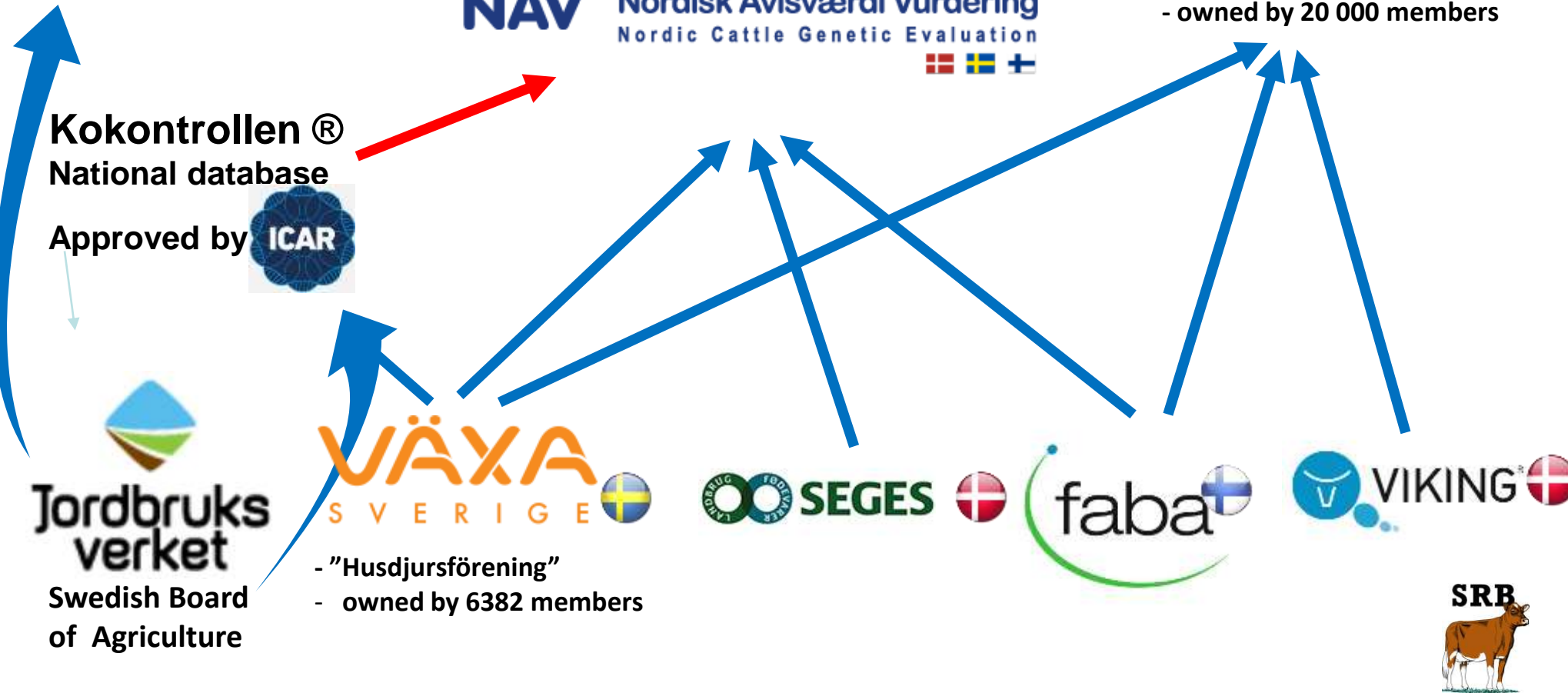


- Breeding company
- owned by 20 000 members

Kokontrollen®
National database
Approved by **ICAR**



- "Husdjursförening"
- owned by 6382 members



Milk recording scheme - registrations

Veterinarians



Hoof trimmers



Technicians



Conformation scorers



Milk producers



Robots



Test milking and slaughter results



Data is carefully collected from many different sources, all gathered in one common database



Official milk recording statistics

	SRB 2019	SRB 2013	Progress 2013 - 2019
Number of cows	70 316	111. 144	- 40 828
Milk kg ECM* (365 days)	9 910	9 191	+ 719
Fat, %	4.4	4.4	0
Protein, %	3.7	3.6	+ 0,1
Fat + Protein, kg	749	689	+ 60
Production per day of life, kg ECM*	13.2	missing	-
Age at first calving, month	27.5	28.2	- 0.7
Calving interval, month	13.0	13.1	- 0.1
Inseminations per pregnancy	1.8	1.9	- 0.1
Calving to last insemination, days	118	missing	-
Difficult calvings heifers, %	2.4	3.7	- 1.3
Stillborn calves heifers, %	5.2	5.8	- 0.6
Mastitis per 100 cows	8.0	12.7	- 4.7
Somatic cell count	249	221	+ 28
Disease incident per 100 cows	18.1	25.9	- 7.8
Age at culling, months	61.3	60.4	+ 0.9
Dead/ euthanized cows in herd, %	3.9	3.6	+ 0.3

* ECM = Energy Corrected Milk

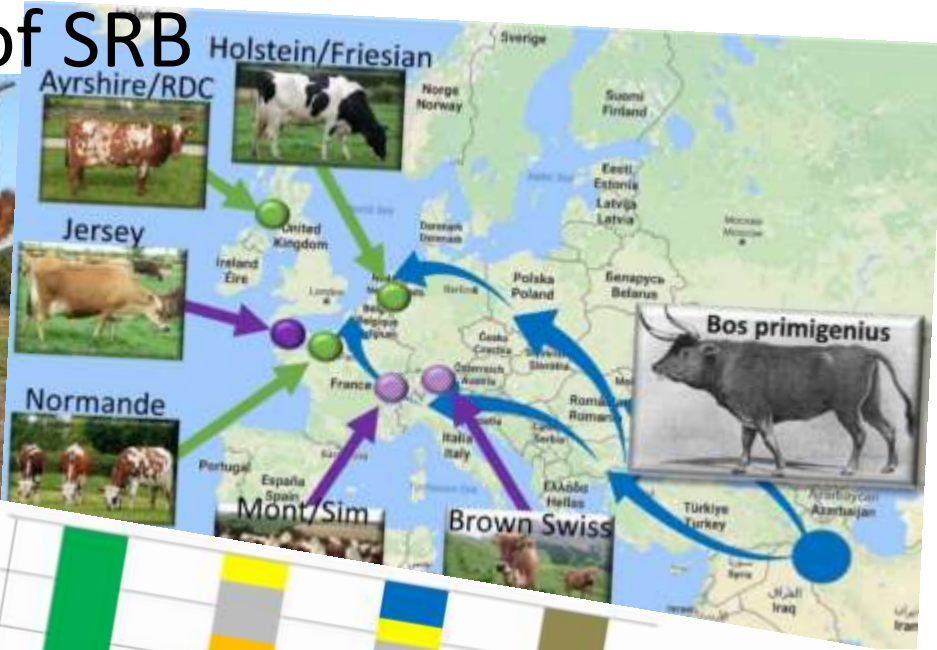


The SRB association

- Founded 1928
- Responsible for herdbook
- Collaborations: VäxaSverige, NAV (Nordic Cattle Genetic Evaluation), VikingGenetics, Swedish University of Agricultural Science
- International collaborations: WAF (World Ayrshire Federation), IRDBF (International Red Dairy Breed Federation) and ERDB (European Red Dairy Breed)
- Livestock trading
- 1 000 members, 23 local clubs and youth club
- Farm visits, showmanship, shows, classifying contests
- Magazine "SRB-bladet"
- Arranging national shows
- www.srb-foreningen.se



History of SRB



SWEDISH RED BREED ASSOCIATION



SRB - WITH DEEP ROOTS IN AYRSHIRE

The SRB breed, or Swedish Red as the breed sometimes is called is an international contact, has very deep roots in the county of Ayrshire. During the period 1847 to 1980, more Scottish Ayrshire was exported to Sweden than any other country in the world, despite Sweden being a sparsely populated country. Several different foreign breeds were tested in Sweden in the middle of the 19th century, but only Ayrshire was found to be suitable for Swedish conditions. In the early 1880s, local Ayrshire herd books began to be established in most counties of Sweden, and of all registered animals up to 1900, the number of Ayrshire registered was many times more than the number of all other breeds together, including Friesians.

THE SRB ASSOCIATION WAS FORMED IN 1928

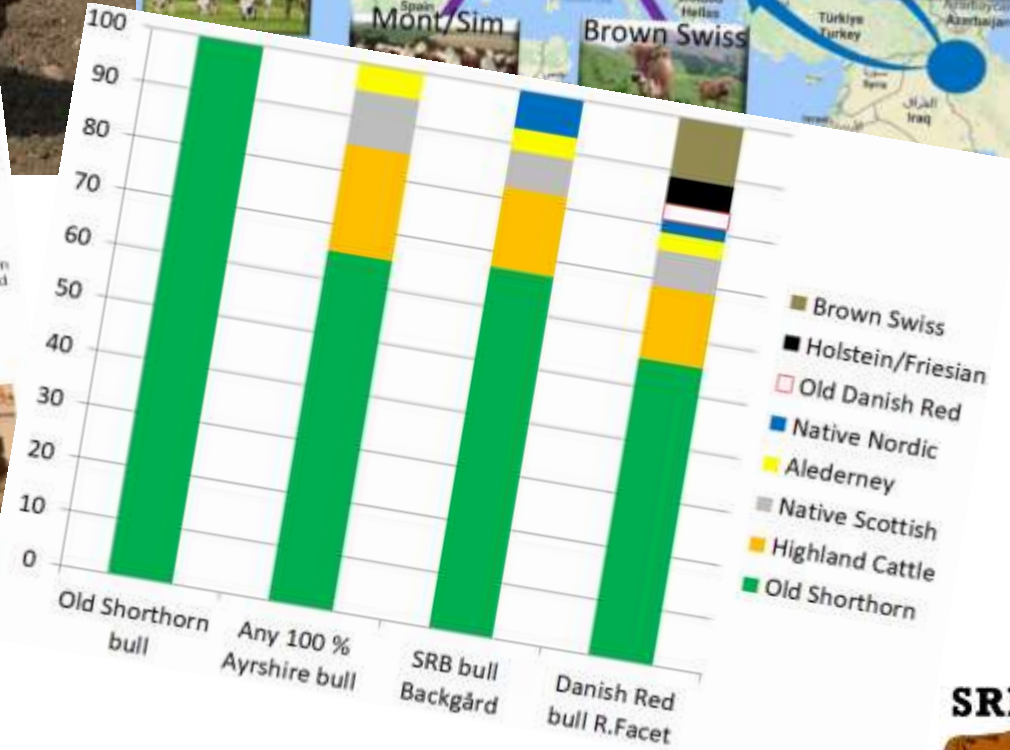
COLLABORATION WITH NORWEGIAN RED AND FINNISH AYRSHIRE FROM THE 1960s

After fusion of the two breeds, most SRB bulls were used in the new breed, but due to the outcross effect, it was the old Ayrshire herds that came to dominate the new SRB breed. But over time, the mistakes of old times were repeated and the inbreeding increased again. Therefore, from the 1960s onwards, a collaboration began with Norwegian Red and Finnish Ayrshire, a collaboration that increased every year (in genetic terms, Norwegian Red at this time was mainly a mix between SRB and Finnish Ayrshire). From the late 1970s, a lot of Canadian Ayrshire blood also began to be incorporated into SRB's breeding program.

Around the turn of the millennium, the situation changed with the formation of the joint Nordic breeding company Viking Genetics in 2008. Cooperation with Finnish Ayrshire continued and expanded, while cooperation with Norwegian Red, which did not join Viking Genetics, gradually decreased (although Norwegian Red continued to import SRB and Finnish Ayrshire).



HISTORICAL FOUNDATION Sires WITH GREAT SIGNIFICANCE FOR THE SRB BREED

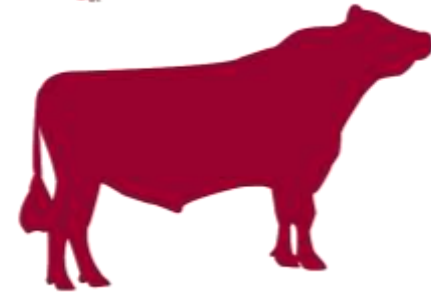


VikingRed – not a breed

VikingRed = VikingGenetics brand and breeding program for:

- Swedish Red (SRB)
- Finish Ayrshire (FAY)
- Danish Red (RDM)

- A VikingRed sire can be any red sire; sometimes an approved SRB/Ayrshire but just as well an RB or a Danish Red.
- An SRB sire can only be an approved SRB with a maximum of 12.5% foreign blood. Regardless of breeding company or country of origin, any imported sire that meets these criteria can also obtain an SRB registration number.



2.800 bulls

Genomically
tested

100 bulls

bought

80 bulls

in production



Genomic testing

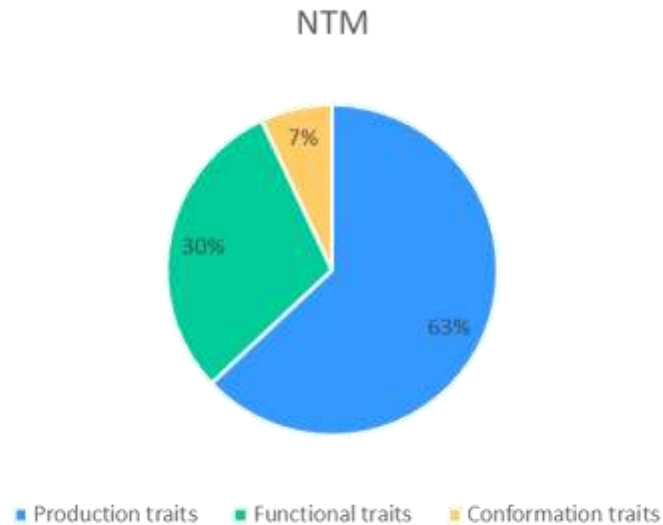


- Introduced about eight year ago
- Breeding tool for Danish Red, Finnish Ayrshire and SRB
- Reliability increased – females added to reference population
- 10 000 females added to reference population *per year*
- Reliability for traits in NTM: 49 – 74 %
- Genomic trend BEFORE genomic testing (2000-2010):
2 NTM units per year
- Genomic trend AFTER introducing genomic testing (2013-2017):
3.4 NTM units per year

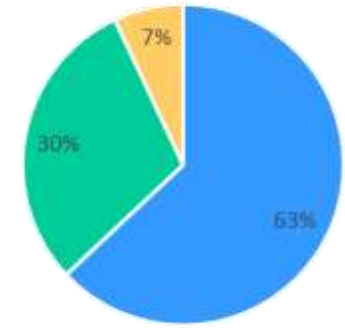


NTM

- NTM = Nordic Total Merit index
- Calculated by NAV (Nordic Cattle Genetic Evaluation)
- Total breeding value for all traits within breeding goal
- Every trait – economical value in breeding goal
- New 2020 – feed efficiency into NTM



Traits within NTM



Production



Longevity



Conformation



Growth



Youth survival/ longevity



Milkability



Daughter fertility



Udder Health



Temperament



Calvings



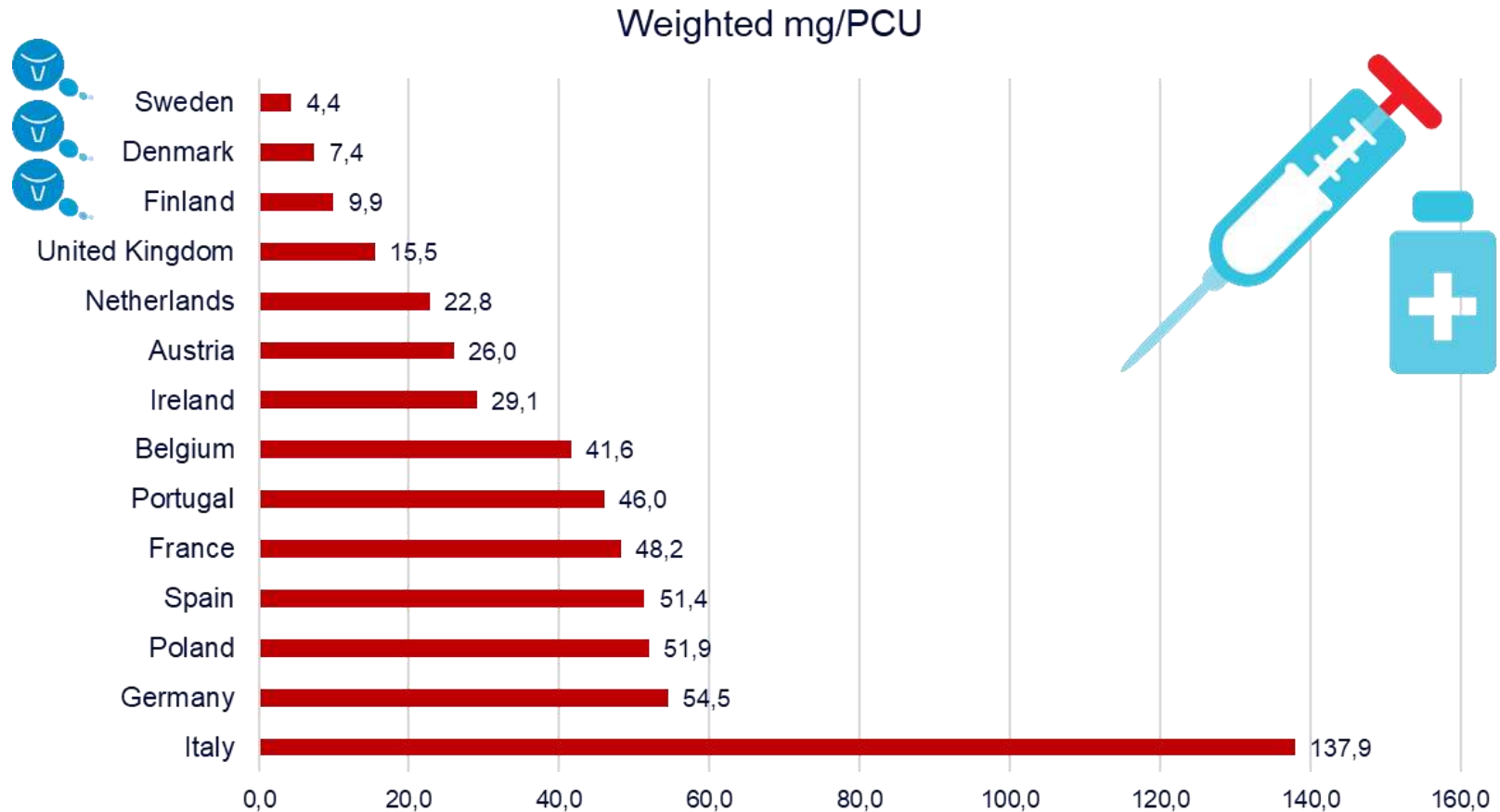
Hoof Health



Other Health



Antibiotic usage



Source: European Medicines Agency, European Surveillance of Veterinary Antimicrobial Consumption, 2016. 'Sales of veterinary antimicrobial agents in 29 European countries in 2014'



Lifetime production

Highest lifetime production in 2018:

Name:	112 Brunetta
Born:	2002-01-14
Total production:	156 155 kg milk
Fat:	4.4 %
Protein:	3.4 %
Fat + Protein:	12 203 kg
Kg ECM:	163 773



Showmanship



Thank you for your attention!

